

CERTIFIED LAND CORNER RECORDATION

DESCRIPTION OF CORNER EVIDENCE FOUND, AND ORIGINAL RECORD (if known)

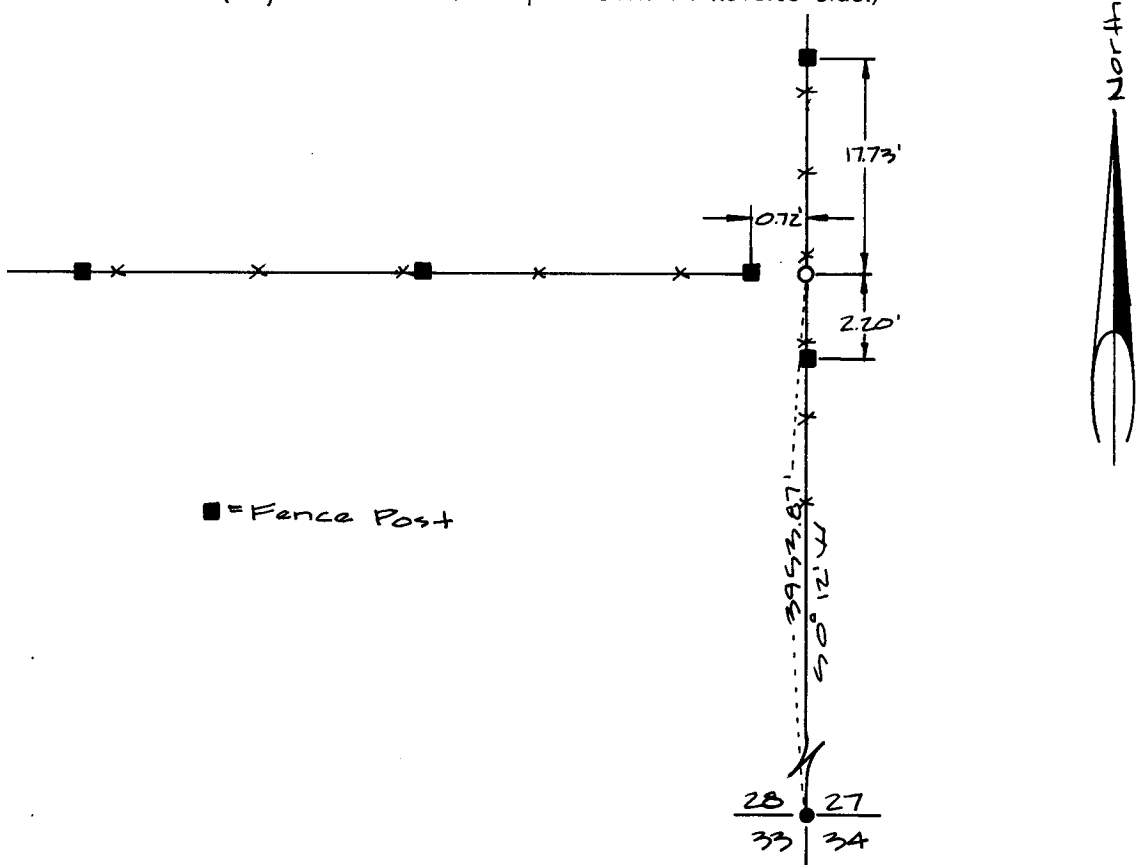
Location
 N. 1/16
 Sec. 28 | Sec. 27
 T.14N. R.61W.
 6th P.M.

Found: 8" X 8" X 12" Limestone with "X"
 on top located from field notes by
 T.H.Baldwin describing this monument.

DESCRIPTION OF MONUMENT AND ACCESSORIES ESTABLISHED
 TO PERPETUATE THE ORIGINAL LOCATION OF THIS CORNER:

At the corner: Found 8" X 8" X 12" Limestone with "X" on top.

SKETCH, WITH COURSE AND DISTANCE TO ADJACENT CORNER IF DETERMINED IN THIS SURVEY.
 (May Sketch or Paste Reproduction on Reverse Side.)



I, Glen L. Roberts certify that I have carefully performed or reviewed the work done on the diagrammed corner as reported on this recordation form and approve the same.

Glen L. Roberts Wyoming P.E. & L.S. #347
 Signature of Surveyor Registration No.

STATE OF WYOMING,
 Office of Clerk and Recorder,
 County of Taramie

588607

This "corner record" was filed for record on the FEB 21 1980 day of _____, 19____, was noted on the cross-index plat and is assigned page No. _____, in book No. _____.

James C. Whitehead
 County Official

Cross Index No. _____	T. _____	R. _____	Mer. _____
<u>T13</u>	T. <u>14</u>	R. <u>61</u>	Mer. _____
_____	T. _____	R. _____	Mer. _____
_____	T. _____	R. _____	Mer. _____
_____	T. _____	R. _____	Mer. _____
_____	T. _____	R. _____	Mer. _____